



A Loyalty And Referral Program  
Designed Just For You



# ABOUT SRIJAN CONNECT

Srijan Connect is an exclusive referral program curated for the property owners of Srijan. It brings with it a golden opportunity for you to experience the joy of bringing your loved ones closer to the Srijan community and earn your way to a bouquet of referral rewards, benefits and much more. This is your chance to create a bond that will last for generations to come!



Dear Member

It is my pleasure to welcome you to the Srijan Family.

I appreciate that you had several choices and placed your trust with us. We congratulate you for choosing Srijan Realty as we have constantly strived to deal transparently with all our customers and consistently delivered on our promises- both in terms of timely delivery and quality of construction and amenities.

No wonder over 11000 discerning customers like you have trusted Srijan Realty while buying the residences that they want to live in. Our members active participation has been highly obliging and has helped our Brand reach new heights. Srijan Connect is our unique method of appreciating and reciprocating to the trust placed by you in us by buying a property with one of our projects.

If you are happy with what you have and feel satisfied, please tell your friends, acquaintances and relatives. Share the contact details of the person with whom you have shared your happiness. We will get in touch with him/her and explore whether your referred person also wants to be a part of the Srijan family by buying any property from us.

I believe this initiative will make our relationship more productive and stronger.

Welcome, once again

Yours Sincerely

On behalf of the Srijan Family

A handwritten signature in white ink on a blue background, reading "Shyam Sunder Agarwal".

**Shyam Sunder Agarwal**

Chairman (CMD)

Srijan Realty Private Limited



## REFER AND EARN

Help your friends and family find their safe haven with Srijan Realty, where luxury overflows. While they get the property of their dreams, you can **EARN UP TO 2%** of the agreement value on every successful referral.

### KNOW YOUR REWARDING JOURNEY

Upto ₹ 1.50 crores

**1%**

of Total Consideration

Above ₹ 1.50 Crore -  
Upto 2.50 Crore

**1.5%**

of Total Consideration

Above ₹ 2.50 Crores

**2%**

of Total Consideration

# KNOW YOUR REWARDING JOURNEY FOR PREMIUM PROJECTS ABOVE 2 CR.

Upto ₹ 4 crores

**1%**

of Total Consideration

Above ₹ 4 Crore -  
Upto ₹ 8 Crore

**1.5%**

of Total Consideration

Above ₹ 8 Crores

**2%**

of Total Consideration

The Scheme is valid from 1st April, 2023 to 31st March, 2024.

## Payout Process

- Base Connect Payout of 1% will be released immediately once the agreement is executed and the referred customer & agent has made 20% payment of the total consideration value.
- The remaining bonus payout will be released at the end of the financial year of the scheme.

## Other Terms & Conditions

- Only residential buyer can be connect member
- Connect member selling commercial properties will be getting flat 1% commission on total consideration amount i.e. Total Consideration - Unit Price+Parking charges + Floor escalation as applicable.
- All Srijan existing customers who are not connect members irrespective of residential or commercial will be entitled for one percent benefit in any new properties they buy from Srijan

# UNLOCKING YOUR REFERRAL BENEFITS

## Who can connect

Only Connect Members of Srijan projects can refer.

## How to connect

You can apply for membership by filling in an application form along with your KYC details (photo ID & address proof).

You can also complete the application procedure online through [connect@srijanrealty.in](mailto:connect@srijanrealty.in)

## Who to connect with

As a Srijan Connect Members, you are eligible to recommend any Srijan project, apartments, row house or Srijan commercial property to your family, friends, colleagues, associates and the like.



CONNECT TO CREATE  
MAGICAL AND REWARDING  
EXPERIENCES JUST LIKE  
THEY HAVE.

**S.SAJID RAHMAN MADE ₹3,56,680**

**RAMADHIN KUMAR MADE ₹2,93,280**

**TUHIN SUVRA MAHAJAN MADE ₹2,90,705**

Note: For the financial year 2022 - 2023



## THE ROYAL GANGES

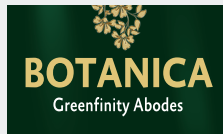
### **THE CITY'S LONGEST RIVERFRONT LIVING. GANGES-FACING 158 VILLAMENTS AND 22 TOWERS.**

- Just 20 mins from New Alipore
- Over 39 lac sq-ft of development with about 19 acres of open spaces on 25+ acres of land
- A private track of over 1 kilometre facing the Ganges
- Private jetty and ferry service to and from Millenium Park (about 35min)
- In-house shuttle service till Taratala Metro station & Bata more
- Podium level exclusive 70,000 sqft Club, THE RIVER CLUB with future-ready amenities & facilities facing the river



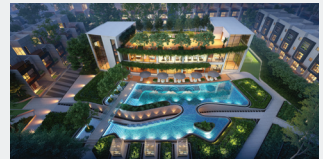
\*All pictures are artist impressions





## UNDER GREEN CLOUDS YOUR OWN HOUSE

- Located off Southern Bypass just 2 km from NSC Bose yet away from the pollution, hustle and bustle of the city life
- The first ever Luxury Bungalow project in Kolkata with International Standard landscape design featuring Hill, Valley, Oasis and Botanic Clouds
- Premium Bungalows sprawled over approximately 11 acres of land, exclusively for 232 families
- Unique Hillside Club house of 25000 sq ft area first of its kind in Kolkata
- Surrounded with 5 sensory gardens - ROMANTIC GARDEN, BUTTERFLY GARDEN, HERB GARDEN, FRUIT ORCHARD & RELAX GARDEN



\*All pictures are artist impressions



## THE FIRST BOUTIQUE COMPLEX ON JESSORE ROAD

- Located right on Jessore Road beside Star Mall, on the main road
- Four level of urban landscaped hubs-Lifestyle, Recreation, Wellness and Sky Sports along with a huge central green zone
- 7 towers with 2,3 and 4 BHK in G+10 and G+11 buildings across more than 400 flats
- Hyper-retail area in two blocks
- The residential complex with podium green plus multiple levels of amenities that will provide the best of its class life experience for home owners
- 15 minutes straight drive from the NSC Bose international Airport
- Railway station, metro, schools, colleges, shops, markets, hospitals, shopping mall, restaurants at stone's throw will ensure a quite, peacesful well-lit and safe haven and a sought after place to be in



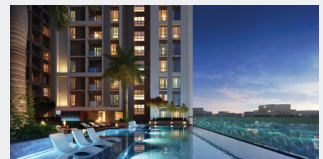
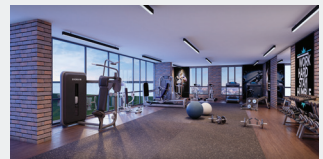
\*All pictures are artist impressions



Laguna**bay**

## WHEN LIFE GETS CLOSE TO SERENITY

- Approximately 67% open space
- 32000 sq ft natural water body
- 4 minutes from Science City
- Well equipped Gymnasium
- Decorated common roof and barbecue area. Yoga/ aerobics/meditation area
- AC banquet hall for hosting parties with attached lawn
- Equipped AC indoor children's playing zone
- Central Lawn for community gathering and festivals etc

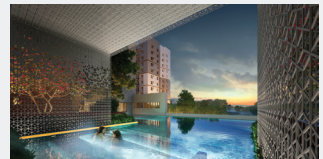


\*All pictures are artist impressions



## LIVING NEAR NEW ALIPORE IS NO LONGER EXPENSIVE

- 1.5 kms from New Alipore Petrol Pump
- About 154 cottahs of open space in around 208 cottahs of land of pristine greenery and global standard landscaping
- Almost all flats will have 3-sides open ensuring ample light and air circulation
- 75% common area to use solar energy
- Rainwater harvesting system
- In-house waste management
- 2100 new saplings to be planted



\*All pictures are artist impressions

HIRA/P/KOL/2019/000442 | [hira.wb.gov.in](http://hira.wb.gov.in)



## WELCOME TO THE CITY

- Largest residential township in Behala on about 45.69 acres of land with almost 33 acres of open space
- 3500 families already living there with ready-to-use dream amenities
- Dedicated AC Bus service from Greenfield City site to the nearest Metro Station
- Just 4 kms from Behala Chowrasta Metro Station
- Biggest Clubbing facility within a complex comprising 2 clubs of almost 50,000 sq ft along with all facilities & amenities ready to use
- Highest number of in house amenities like in house shopping plaza, doctor's chamber, ambulance service, upcoming health centre, 24x7 electricity and filtered water supply and many more
- Under construction flats available at affordable prices with approval from all leading banks and financial institutes
- The only project to win 10 prestigious real estate awards



\*All actual photographs used

Phase V - HIRA/P/SOU/2020/000845 | [hira.wb.gov.in](http://hira.wb.gov.in)

Greenfield City is a joint venture project between Bengal Greenfield Housing Development Company Ltd and Srijan Realty Pvt Ltd



## 3-SIDE OPEN FLATS ON EM BYPASS

- The largest residential luxury on south EM Bypass right on the main EM Bypass road with approx 530 homes of 3/4 BHK, 2 natural water-bodies, & G+24 towers
- An exclusive 30,000 sq ft club at 4th floor of the podium level with luxurious facilities and amenities The best and world class in the vicinity
- Just 1.6 kms from Khudiram Metro station and smooth commuting through Ultadanga to Garia
- The promise of a quality project without any compromise and on-time delivery
- 1<sup>st</sup> & 2<sup>nd</sup> phase sold out
- 3<sup>rd</sup> phase near to completion
- Construction is in full swing



\*Actual photograph and artist impressions

Phase I - Delivered | Phase II & III - Bookings on | Phase II near to completion

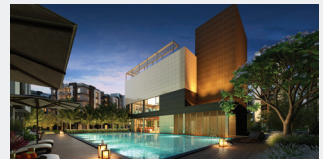
Phase II - HIRA/P/SOU/2018/000009 | Phase III - HIRA/P/SOU/2019/000524 [hira.wb.gov.in](http://hira.wb.gov.in)



**ETERNIA**  
Maximum at **Madhyamgram**

## MAXIMUM SERENITY. MAXIMUM SKY

- Largest project in Madhyamgram
- Pollution free Serene environment with large water bodies around
- Almost 69% open space with all modern facilities
- Developed by the most renowned and reliable developers in Kolkata
- Landscaping by national award winning landscapist



\*All pictures are artist impressions.

Phase I - HIRA/P/NOR/2018/000175 | Phase II - HIRA/P/NOR/2018/000142 Phase III - HIRA/P/NOR/2018/000143 | [hira.wb.gov.in](http://hira.wb.gov.in)



**nirvana**  
your attainment

## YOUR OWN HOME IN A SECURED COMPLEX

- A paradise near Southern Bypass, with around 300 houses, G+1, G+2 in approx 12.32 acres with all the facilities of living in a gated complex with complete security, a club swimming pool & many other facilities
- A scientific orientation of two-side open and a unique skylight roof will offer 96% to 100% daylight in each house to ensure a healthy environment
- Living and dining area with skyroof
- Solar panel on the Club rooftop
- No Super built-up in your own space
- Exclusive access to your terrace
- Front garden and backyard green lawn
- Car parking at your doorstep



\*Actual photograph and artist impressions.

Phase II - HIRA/P/SOU/2018/000134 | Phase III - HIRA/P/SOU/2018/000137

Phase IV - HIRA/P/SOU/2019/000453 | [hira.wb.gov.in](http://hira.wb.gov.in)





## LIVE MORE IN SOUTHWINDS

- Our community of happy families has expanded to 1500 & more
- Spread over approx 972 cottahs of land with 1,951 apartments, 6 blocks: G+11, 1 block : G+13, 5 blocks: G+15, 4 block: G+18 along with 15000 sq ft of second club house
- In-house Shopping Centre and best-in-class amenities
- 4.7 kms - Ramakrishna Mission
- 2.8 kms - Harinavi Bazar
- 4.8 kms - Wood Square Mall
- 9.8 kms - Kavi Nazrul Metro
- Zing - a 30,000 sq ft plush residential club with state-of-the-art dining, recreational & wellness features
- Kolkata's first micro township in South Kolkata
- Located on Southern Bypass with over 1500 ft frontage
- 65% open space with ample greenery



\*Actual photograph and artist impressions.

Phase II - HIRA/P/SOU/2018/000134 | Phase III - HIRA/P/SOU/2018/000137

Phase IV - HIRA/P/SOU/2019/000453 | [hira.wb.gov.in](http://hira.wb.gov.in)



# COMMERCIAL PROJECTS



## WORLD-CLASS, LOGISTIC PARK AT B.T. ROAD

- 24X7 complex with world class construction
- G+3 RCC structure with multi-level warehouse concept and 5-metres x 7-metres column span
- 11 massive room-size goods lifts of 4 tonnes for easy transportation of heavy goods
- 10 passenger lifts of a maximum of 10-15 people's capacity
- Computerized Weigh Bridge facility of up to 60 MT will cater to large and heavy containers with complete ease of operations enabling savings of both time and money
- DG and power back-up facility for all common services as well as for occupants will be made available at an extra cost for a secure 24 x 7 work environment
- A commercial block of 185000 sqft approx providing unparalleled visibility with a frontage of 350 ft in the heart of BT Road



\*All images are artist impressions.



# intellia

the central business park

## THE LARGEST UNOFFICE WORKSPACE NEAR PARK STREET

- 57,000 sq.ft. unmatched ultra-luxury business club
- City's largest A grade intelligent central business park
- Located in the heart of the city spread across about 340 cottahs land
- 65% open space with ample greenery and natural waterbody
- Modern lifestyle amenities to keep you rejuvenated & stress free
- In house shuttle service to Sealdah and Park Street metro
- 24X7 operational



NB Platinum  
Pre-certified

\*All images are artist impressions.



## GLOBAL STANDARD INDUSTRIAL LOGISTIC PARK IN TARATALA

- Built on a land parcel of more than 9 acres, just 3.5 kms from Taratala more, Near Jhinhira Bazar crossing on Budge Budge Trunk Road
- A world-class infrastructure, with units' size varying from 6,000 sq ft to 7,00,000 sq ft
- One of the most organized logistics parks of East India with State-of-the-art facilities, world-class maintenance and all the necessary statutory compliances
- Proximity to densely populated Maheshtala, Budge Budge, Alipore and Behala provides access to a huge urban market
- Labour quarter with canteen for on-site staff and availability of multiple modes of public transport like trains, bus, taxi and ferry for mobile staff
- Bank, ATM and cafeterias for clients and visitors
- Several massive goods elevator of 4 ton each to enable easy carrying of a large amount of goods resulting in shortest imaginable lead times
- Roads up to 32 feet wide to provide easy movements of big trolleys and heavy commercial vehicles
- Beautifully landscaped open area



\*All images are artist impressions.



## WORLD CLASS INDUSTRIAL LOGISTIC HUB

- Built on an area of more than 4.25 acres, the hub is fully planned to specifically cater to industrial and logistics needs along Budge Budge Trunk Road
- Units ranging from 4,000 sq ft to 4,00,000 sq ft available on sale
- Modern facility with the most modern and state-of-the-art infrastructure close to Taratala, one of the oldest and busiest logistic hubs in Kolkata
- Proximity and access to a huge market in the Budge Budge catchment area and its densely populated neighbourhoods along with easy connectivity to the broader markets of Kolkata
- Abundant supply of labour, transport and other advantages that come with a well developed and functioning logistics ecosystem of Budge Budge Road
- A commercial block of 76,000 sq ft providing unparalleled visibility with a frontage of 170 ft in the heart of Budge Budge Road
- Several massive goods elevator of 4 ton each to enable easy carrying of a large amount of goods resulting in shortest imaginable lead times



\*All images are artist impressions.



## RETAIL SPACES ON JESSORE ROAD

- Located right on Jessore Road beside Star Mall
- Hyper-retail area in two blocks
- 12000 sq ft onwards retail spaces in high street zone, having 250 ft frontage and an excellent height of 13 ft. on the ground floor and 14 ft on the 1<sup>st</sup> floor
- Located inside the residential complex, it will provide an access to a direct consumer base of more than 400 families
- Specifically planned to cater to the Food & Beverage, FMCG, Grocery store, Apparels, Consumer Durables and Electronics requirements of consumers
- 15 minutes straight drive from the NSC Bose international Airport
- Railway station, Metro, schools, colleges, shops, markets, hospitals, shopping mall, restaurants at a stone's throw



\*All images are artist impressions.

DESIGNED TO UNLEASH  
THE POWER OF  
HAPPIER COMMUNITIES







## OUR PRESTIGIOUS WINS

- |   |  |   |
|---|--|---|
| 1<br>Srijan Global Haat<br>Credai Howrah Hoogly -<br>Shrachi realty awards 2023<br>Best Commercial Project in<br>Howah 2023 Winner              | 7<br>Greenfield City<br>Economic Times Real Estate<br>Conclave Awards 2022 - EAST<br>Best Residential Project - Mixed<br>Use 2022 Winner     | 13<br>Greenfield City<br>Realty Plus Conclave &<br>Excellence Awards 2022 East<br>Mixed Use Project of the Year<br>2022 Winner                                      |
| 2<br>Srijan Realty<br>Sanmarg Business<br>Awards 2023<br>Excellence in Real estate<br>2023 Winner   | 8<br>Nirvana<br>Economic Times Real Estate<br>Conclave Awards 2022 - EAST<br>Best Residential Project - Row<br>house 2022 Winner             | 14<br>Botanica<br>Realty Plus Conclave &<br>Excellence Awards 2022 East<br>The Best Themed Project of<br>the Year 2022 Winner                                       |
| 3<br>Natura<br>CREDAI Bengal Realty<br>Awards 2022<br>Best Mid-segment<br>Housing Project<br>2022 Winner  | 9<br>Srijan Realty<br>ET Industry Leaders Real<br>Estate Awards 2022 Iconic<br>Real Estate Brand of the year<br>2022 Winner                  | 15<br>Srijan Realty<br>Realty Plus Conclave &<br>Excellence Awards 2022 East<br>Emerging Developer of the<br>Year-Industrial and Warehouse<br>2022 Winner           |
| 4<br>Solus<br>CREDAI Bengal Realty<br>Awards 2022<br>Best Budget Housing<br>Project 2022 Winner   | 10<br>Srijan Realty<br>Times Real Estate Review<br>2022 Dynamic Developer of<br>the Year 2022 Winner   | 16<br>Srijan Realty<br>Times Real Estate Review 2022<br>Dynamic Developer of the Year<br>2022 Winner  |
| 5<br>Srijan Realty<br>Economic Times Real Estate<br>Conclave Awards 2022 East<br>Best Developer - Commercial<br>Project (Metro) 2022 Winner     | 11<br>Ozone<br>Realty Plus Conclave &<br>Excellence Awards 2022 East<br>The Most Environment<br>Residential Space of the year<br>2022 Winner | 17<br>Srijan Industrial Logistic Park<br>Economic Times Real Estate<br>Conclave Awards 2021 - EAST<br>in the Industrial/warehousing<br>Project category 2021 Winner |
| 6<br>Srijan Industrial Logistic Park<br>Economic Times Real Estate<br>Conclave Awards 2022 - EAST<br>Iconic Project - Commercial<br>2022 Winner | 12<br>Eternia<br>Realty Plus Conclave &<br>Excellence Awards 2022 East<br>Re-development Project of the<br>Year 2022 Winner                  | 18<br>Nirvana<br>ITC Royal Bengal 12th Realty +<br>Excellence Awards 2020, East<br>Villa Project of the Year<br>2020 Winner   |

- 19  
Eternis  
CREDAI BENGAL Realty Awards 2019  
Best upcoming budget residential project (Above 4 lakh sqft). 2019 Winner
- 20  
OZONE  
11th Realty + Excellence Awards 2019 East  
Mid segment project of the year 2019 Winner
- 21  
The Address  
(Address Office Block) CREDAI Bengal Realty Awards 2019  
Best Completed commercial project. 2019 Winner
- 22  
Southwinds Phase I  
CREDAI Bengal Realty Awards 2019  
Best Completed Budget Housing Project 2019 Winner
- 23  
Southwinds Phase I  
CREDAI Bengal Realty Awards 2019  
Best Completed Budget Housing Project 2019 Winner
- 24  
PS Srijan Corporate Park  
Remax India Estate 10th Annual Awards 2018 organised by Franchise India & Media Partner ET Now  
Business/IT Park of the Year (East) 2018 Winner
- 25  
Srijan Industrial Logistic Park  
Remax India Estate 10th Annual Awards 2018 organised by Franchise India & Media Partner ET Now  
Commercial property of the year (East) 2018 Winner
- 26  
Srijan Industrial Logistic Park  
Remax India Estate 10th Annual Awards 2018 organised by Franchise India & Media Partner ET Now Most innovative project of the Year Commercial (East) 2018 Winner
- 27  
Srijan Industrial Logistic Park  
CNBC Awaaz Real Estate Awards 2018 (East Zone)  
Special Commendation for contribution in logistics infrastructure Winner
- 28  
Srijan Industrial Logistic Park  
ET Now Real Estate Awards 2018  
Commercial Property of the Year Winner
- 29  
Srijan Realty Pvt Ltd  
ET Now Real Estate Awards 2018  
Brand of the Year Winner
- 30  
Srijan Realty Pvt Ltd  
ET Now Real Estate Awards 2018  
Excellence in Delivery Winner
- 31  
Srijan Realty Pvt Ltd  
ET Now Real Estate Awards 2018  
Quality Assurance Award. Winner
- 32  
Srijan Realty Pvt Ltd  
ET Now Real Estate Awards 2018  
CSR Initiative of the year by a Real Estate Firm Winner
- 33  
Srijan Realty Pvt Ltd  
ET Now Real Estate Awards 2018  
Developer of the year Winner
- 34  
Srijan Connect Loyalty Programme  
10th Realty Plus Conclave & Excellence Awards 2018 East Consumer Connect Initiative of the year Winner
- 35  
Srijan Realty Pvt Ltd  
10th Realty Plus Conclave & Excellence Awards 2018 East Excellence in Delivery Winner
- 36  
PS Srijan Corporate Park  
10th Realty Plus Conclave & Excellence Awards 2018 East Commercial property of the year Winner
- 37  
Panache  
Remax India Estate 10th Annual Awards 2018 organised by Franchise India & Media Partner ET Now  
Residential Property of the year (East) Winner
- 38  
Greenfield City  
Remax India Estate 10th Annual Awards 2018 organised by Franchise India & Media Partner ET Now  
Integrated Township of the Year. Winner
- 39  
Greenfield City  
ET Now Real Estate Awards 2018  
Intergrated Township of the Year Winner
- 40  
Greenfield City  
ET Now Real Estate Awards 2018 Affordable housing of the Year Winner
- 41  
Greenfield City  
CREDAI Bengal Realty Awards - 2018

Best completed budget housing project (Above 4 lakh sqft) Winner  
acres Winner

42  
Vyom  
Remax India Estate 10th Annual Awards 2018 organised by Franchise India & Media Partner ET Now Environmental-friendly project of the year, Residential (East) Winner

43  
SPS Srijan Corporate Park  
ABP News Real Estate Awards 2017  
Environment Friendly Project of the Year (Commercial) Winner

44  
Srijan Realty  
ABP News Real Estate Awards 2017  
Best Quality Assurance Awards Winner

45  
Srijan Realty  
ABP News Real Estate Awards 2017 Award for professional Excellence in Real Estate Certificate of Merit

46  
Srijan Connect Loyalty Programme  
ABP News Real Estate Awards 2017 Most Ad Winner

47  
Srijan Connect Loyalty Programme  
Realty Plus Conclave & Excellence Awards 2017  
Consumer Connect - Initiative Winner

48  
PS Srijan Corporate Park  
Real Estate Star Rating by Crisil Ltd 2017  
Kolkata 7-Star Project

Rated as Kolkata 7-Star Project  
49  
Greenfield City  
Golden Brick Awards 2016  
Budgeted Housing Project of the Year Winner

51  
Greenfield City  
Golden Brick Awards 2016  
Budgeted Housing Project of the Year Winner

50  
Greenfield City  
DNA Real Estate & Infrastructure Round Table & Awards 2016 Affordable Housing Project of the Year Winner

52  
Ozone  
ABP News Real Estate Awards 2016  
Environment Friendly Project of the Year (Residential) Winner

53  
Srijan Industrial Logistic Park  
DNA Real Estate & Infrastructure Round Table & Awards 2016  
Professional Excellence in Real Estate Winner

54  
PS Srijan Corporate Park  
DNA Real Estate & Infrastructure Round Table & Awards 2016  
Commercial Property of the Year Winner

55  
Srijan Realty  
DNA Real Estate & Infrastructure Round Table & Awards - 2016  
Real Estate Company of the Year Category  
Certificate of Merit

56  
Srijan Realty  
Maggie Estate Awards 2016 organised by Franchise India & Media Partner ET Now 2016  
Regional Developer of the Year East Winner

57  
PS Srijan Corporate Park  
Maggie Estate Awards 2016 organised by Franchise India & Media Partner ET Now  
Environment Friendly Project of the Year (Commercial) Winner

58  
Srijan Realty  
Frost & Sullivan Sustainability 4.0 Awards 2016  
Certificate of Merit

59  
Srijan Realty  
CII Encon Awards 2016 Energy Conservation Awards, CII Eastern Region  
Certificate of Appreciation

60  
Ozone  
ABP News Real Estate Awards 2016  
Environment Friendly Project of the Year (Residential) Winner

61  
Srijan Industrial Logistic Park  
DNA Real Estate & Infrastructure Round Table & Awards 2016  
Professional Excellence in Real Estate Winner

62  
PS Srijan Corporate Park  
DNA Real Estate & Infrastructure Round Table & Awards 2016  
Commercial Property of the Year Winner

63	Srijan Realty DNA Real Estate & Infrastructure Round Table & Awards - 2016 Real Estate Company of the Year Category Certificate of Merit	2015 Best upcoming Mid-Segment Residential Project Winner
64	Srijan Realty Magpie Estate Awards 2016 organised by Franchise India & Media Patner ET Now 2016 Regional Developer of the Year East Winner	71 Zen CREDAI Bengal Realty Awards 2015 Best Brochure Winner
65	PS Srijan Corporate Park Magpie Estate Awards 2016 organised by Franchise India & Media Patner ET Now Environment Friendly Project of the Year (Commercial) Winner	72 Srijan Midlands Credai Bengal Realty Awards 2014 Best Budget Housing Project (1 to 4 Lakh Sq-ft) Winner
66	Srijan Realty Frost & Sullivan Sustainability 4.0 Awards 2016 Certificate of Merit	73 Srijan Realty Pvt Ltd CREDAI Bengal In CREDAI Home Front 2014 Best Designed Stall Winner
67	Srijan Realty CII Encon Awards 2016 Energy Conservation Awards, CII Eastern Region Certificate of Appreciation	74 The Grand Mall India's Top 100 projects 2014 India's Top 100 Projects Winner
68	Greenfield City Property India Estate Awards 2015 Affordable Housing of the year (East) Winner	75 The Grand Mall 6th Realty Plus Conclave & Excellence Awards (South) 2014. Emerging Developer of the Year (Retail) Winner
69	Greenfield City CNBC Awaaz Real Estate Awards 2015 Best Affordable Housing Project Winner	76 Continental India's Top 100 Projects 2014. Winner
70	Panache CREDAI Bengal Realty Awards	77 Sherwood Estate CNBC Awaaz Crisil- Credai Real Estate Awards 2010 Best Residential Property (Eastern Region) Winner

# OUR EVENTS ARCHIVE - 2022





## ADDRESS

SRIJAN HOUSE, 36/1A, Elgin Road,  
Kolkata, West Bengal - 700 020  
[connect@srijanrealty.in](mailto:connect@srijanrealty.in)  
Ph: 9830096135